



产品宣传册
Product Brochure

关于世赫 About us



世赫集团全称为：上海世赫机械工业集团有限公司；创建于2009年，起初业务为流体机械设备生产制造；经过十余年努力，世赫集团已经发展成一家大型机械工业集团公司，集团总部位于中国上海虹桥，在上海市金山区、江苏省无锡市和扬州市设有生产基地，厂房总面积达32000多平方米，配备先进生产加工及检测设备160多台套，包含：车铣复合加工中心，大型龙门五轴加工中心，卧式五轴镗铣加工中心，立式五轴加工中心，立式数控车床加工中心，三坐标精密测量仪，影像测量仪，精密高度仪等，生产与品控能力强大，完全按照ISO9001质量管理体系进行产品设计、加工、组装、检测，并通过专业机构认证！

世赫集团下设多个事业部，核心产品有：MOFA制浆系统、双行星动力分散搅拌机、纳米浆料研磨设备、粉体/液体自动配料系统，成套设备以及项目建设EPC总承包业务等；产品广泛应用于电池浆料、电子浆料、陶瓷浆料、胶黏剂、涂料油墨、医药食品、磁性材料等行业。

集团全系列核心产品全部通过欧盟产品CE认证，先后为全球100多个国家10000多家用户提供产品与服务，获得广泛好评。

关于世赫 About us



SIEHE Group, established in year 2009, starts with liquid machine manufacturing. After more than ten years of efforts, SIEHE Group has developed into a large-scale machinery industry group company. Its headquarter is located in Hongqiao, Shanghai, China. Its production bases are in Jinshan Shanghai, Wuxi and Yangzhou in Jiangsu, with a total plant area around 32000m². The production bases are equipped with more than 160 sets of advanced production processing and testing equipment including: turning and milling center, large gantry five-axis machining center, horizontal five-axis boring and milling machining center, Vertical five axis machining center, vertical CNC lathe machining center, trilinear coordinates precision measuring instrument, image measuring instrument, precision altimeter etc. With strong production and quality control capacity, SIEHE group carries out product design, processing, assembly and testing in full accordance with the ISO9001 quality management system and has passed professional institution certification.

SIEHE Group has several business divisions, and core products are: MOFA Slurry Production System, Powerful Double Planetary Dispersing Mixer, Nano Slurry Grinding Equipment, Powder/Liquid Automatic Batching System, Complete Production Line and EPC general contracting business for project construction and so on. Our machines are widely applied in industries such as battery slurry, electronic paste, ceramic paste, adhesive, paint and ink, medicine and food, magnetic materials and so on.

The whole series of core products have all passed the Europe CE certification. SIEHE Group has provided products and services for more than 10,000 users in more than 100 countries around the world and is widely acclaimed!

关于世赫 About us

加工能力 Processing Equipment



山崎马扎克-车铣复合加工中心
Mazak-Turning and Milling Center



卧式五轴镗铣加工中心
CNC Boring and Milling Machining Center



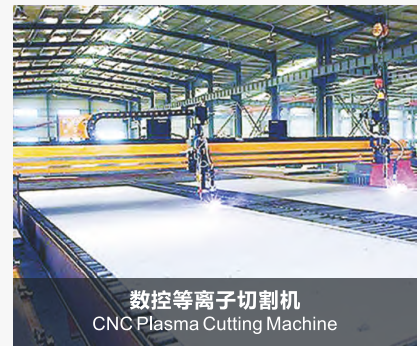
龙门五轴加工中心
Five-axis Gantry Machining Center



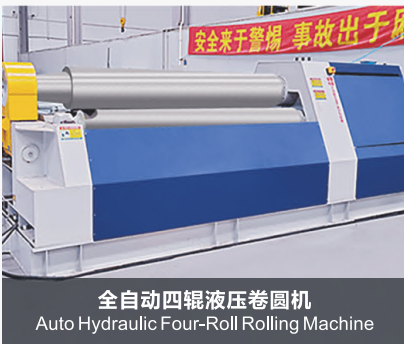
数控立式车床
CNC Vertical Lathe



立式加工中心
Vertical Machining Center



数控等离子切割机
CNC Plasma Cutting Machine



全自动四辊液压卷圆机
Auto Hydraulic Four-Roll Rolling Machine



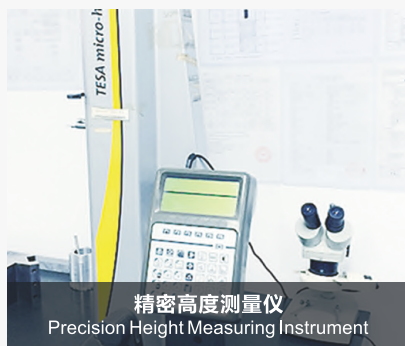
自动抛光机
Automatic Polishing Machine



焊接设备
Welding Equipment



三坐标测量仪
CMM (Coordinate Measuring Machine)









精密高度测量仪
Precision Height Measuring Instrument



焊缝处理
Weld Treatment

关于世赫 About us

资质证书 Our Qualification

							
ISO9001	珠磨机 Beads Mill	篮式研磨机 Basket Mill	分散机 High speed Dispenser	行星搅拌机 Planetary Mixer	乳化机 High shear Mixer	挤出机 Extrusion Machine	三辊机 Tri-Roll Mill
							
实验室卧式珠磨机 Lab Horizontal Beads Mill	卧式珠磨机 Horizontal Beads Mill	行星搅拌机 Planetary Mixer	篮式研磨机 Basket Mill	立式螺带混合机 Vertical Ribbon Mixer	实验室多功能一体机 Lab Multi-functional Machine	在线式粉液混合乳化机 Powder-Liquid High-speed Dispenser	卧式犁刀真空干燥混合机 Horizontal Vacuum Dryer

我们的客户（部分） Our Customers (Partly)

实验室设备 Laboratory Equipment

全系列实验室及研发用设备：研磨分散、均质乳化和搅拌混合等设备，无论是流体浆料、高粘度浆料还是粉末颗粒物料的处理，都能在我们的实验室设备中找到适合于您的机型。

Equipment with full range used for lab and R&D including Mills, Dispersers, Homogenizers, Mixers/Blenders etc. No matter you are processing liquid paste, high-viscosity slurry or powder/granule materials, you can find a right one.

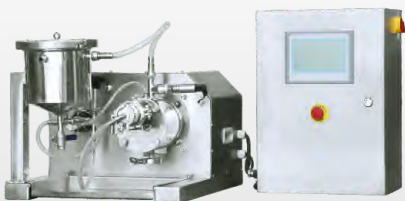


实验室多功能一体机 Laboratory Multi-functional Machine



- 配有篮式研磨、分散、乳化、真空搅拌和搅拌磨五个工作模式
- 功率为1100W，转速可达6000rpm（变频调速）
- 采用西门子HMI人机界面，功能强大且操作简单
- Five working modes for five working heads respectively: Basket Mill, Disperser, High-shear Emulsifier, Vacuum Mixer and Mixing Grinder
- Power: 1100w. Maximum Rotation Speed is up to 6000rpm (frequency control)
- Adopt SIEMENS HMI with powerful function and easy operation

实验室卧式砂磨机C Lab Horizontal Beads Mill-C



- 配有微齿轮输送泵，可用中低粘度产品的研磨实验，细度可达纳米级，处理量500-2000ml
- 缝隙式分离系统，最小可使用直径为0.2mm及以上的研磨珠
- Equipped with gear pump, suitable for grinding materials with low-and -mid viscosity. Grinding fineness can be down to nano-level. Capacity: 500-2000ml
- Gap-type separating system, grinding beads size is $\geq \phi 0.2\text{mm}$

实验室设备 Laboratory Equipment

实验室行星搅拌机 Lab Planetary Mixer



- 用于中高粘度浆料的混合分散，处理量 $\leq 20L$
- 一体式结构，配有液压出料机
- Suitable to mix and disperse materials with mid-and-high viscosity, capacity $\leq 20L$
- All-in-one structure, equipped with hydraulic extrusion machine

实验室双轴分散机 Lab Double Shaft Dispenser



- 用于中高粘度产品的分散搅拌
- 包含蝶式分散&刮壁分散两种设计
- 带真空与加热冷却功能
- Applicable for dispersing and mixing materials with mid-and-high viscosity
- Including Butterfly Dispenser and High speed Dispenser with Scraper
- Functions of vacuum and heating/cooling are optional

实验室粉体混合机 Lab Powder Mixer



- 用于粉&粉或粉&液的混合，液体加入可采用喷雾方式，提高包覆效果
- 侧开门设计，方便清理；全不锈钢材料，符合GMP标准规范
- Applicable for mixing powder-and-powder or powder-and-liquid materials And the liquid can be sprayed to the powders to improve the covering effect
- With side door, easy to clean. Full stainless steel option to meet the GMP standards

流体浆料处理设备 Liquid Paste Production Equipment

世赫集团针对流体浆料处理研发了多种具有自主知识产权的先进产品，包含篮式研磨机、卧式砂磨机、分散搅拌机、乳化均质机、在线混合系统等，功能强大，生产能力50-15000L/批次，完全能够满足不同物料和不同工艺的生产需求。

SIEHE Group have developed various advanced machines for liquid paste with intellectual property rights including Basket Mill, Horizontal Beads Mill, Dispersing Mixer, Emulsifying Homogenizer, Inline Mixing System etc.. They are with powerful functions ranging from 50l-15000L/batch to meet the production requirements of different materials property and production technology.



液压升降高速分散机 High-speed Dispenser (Hydraulic Lifting)



- 固液混合、分散设备，功率2.2-250kw,最大处理量15000L/批
- 极高的线速度，效率高且均匀度好
- 可定制防爆，满足ATEX要求
- For dispersing and mixing solid-liquid materials, power: 2.2-250kw. Max. capacity is 15000L/batch
- With high tip speed, high efficiency, the finished products are with good uniformity
- ATEX configuration can be customized

液压升降高速分散机（带升降盖） High-speed Dispenser (With Lifting Cover)



- 配置可升降的盖子，有套管和气缸升降两种形式
- 带有联动式的抽风口，降低粉尘，改善工作环境
- 多种抱夹形式可选，操作便捷
- Equipped with lifting cover (sleeve type / pneumatic lifting type)
- With interlocked exhaust port to reduce dust to improve working surroundings
- Different clamps are optional, easy to operate

流体浆料处理设备 Liquid Paste Production Equipment

真空型液压升降高速分散机 Vacuum High-speed Disperser



- 为消除浆料在分散搅拌过程中产生气泡而设计的产品
- 配置高性能的真空系统，真空度可达20mbar
- 另可选配压力和温度控制系统
- Designed for eliminating the bubbles generated during materials dispersing and mixing
- Equipped with good vacuum system, vacuum degree can be up to 20mbar
- Pressure and temperature control system are optional

液压升降蝶式分散搅拌机 Dual-shaft High-speed Disperser



- 用于中等粘度产品的分散搅拌，如胶印油墨、汽车腻子等
- 独特的蝶式搅拌，提高分散效率和质量，并可选装刮壁机构
- 有真空机型可选，并可配置压力、温度控制
- Suitable to disperse and mix materials with mid-and-high viscosity such as offset ink
- Specially designed butterfly type agitator improves dispersing efficiency and dispersing result significantly, scraper is optional
- Vacuum type is optional, can be equipped with pressure and temperature control .

同心双轴液压升降分散机 Co-axial Dual-shaft High-speed Disperser



- 欧洲热销产品，采用同轴式传动机构，低速的刮壁浆叶和分散器逆向旋转，有效解决了浆料挂壁的问题，同时减少死角，提高分散搅拌效率
- 有真空机型可选，并可在真空状态下使分散器上下运动搅拌
- Hot sell products in Europe, which adopts co-axial transmission mechanism: low speed scraper rotates in opposite direction with dispersing disc which scrapes the residues on tank wall, reduces mixing dead corner to improve dispersing and mixing efficiency
- Vacuum type is optional, and dispersing disc can also be move up and down when it is working under vacuum state.

流体浆料处理设备 Liquid Paste Production Equipment

釜用升降型分散机 Disperser Mounted On Kettle (Hydraulic Lifting)



- 欧洲热销产品，设备运转时分散盘可上下往复升降，提高分散效率，加工批量在500-10000L/批
- 釜体可选装夹套或盘管结构，满足加热或冷却要求
- Hot sell products in Europe, dispersing disc can be moved up and down during operation to improve dispersing efficiency significantly, capacity is 500-10,000L/batch
- Jacket or limpet coil is optional for cooling or heating

平台式一机多缸型分散机 Platform Type High-speed Disperser (One Machine With Multi-tanks)



- 为提高设备使用效率减少投资而设计的高性能设备，一台设备配置二或三个容器，最多允许配置四个容器
- 加工批量最大15000L
- A machine with high performance is designed to increase machine utilization rate and to lessen investment. One machine can working with two tanks or three tanks, max. four tanks
- Max. capacity: 15,000L/batch

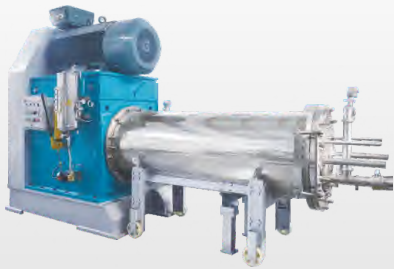
圆盘卧式砂磨机 Horizontal Beads Mill (Disc Type)



- 广泛用于涂料、油漆、油墨、农药等流体浆料的研磨分散，细度可达10-20um
- 最大每小时加工流量可达6000L
- 操作简便，易维护、易清洗
- Widely used for grinding and dispersing liquid pastes such as coating, paint, ink, pesticide etc.. The final fineness can be down to 10-20 micron.
- The Max. production flow can be up to 6000L/h.
- Easy to operation, to maintain and to clean.

流体浆料处理设备 Liquid Paste Production Equipment

超细大流量卧式砂磨机 Ultra-fine Large Flow Horizontal Beads Mill



- 广泛用于汽车漆、工业漆、色浆等对细度要求较高的浆料研磨，轻松实现微米级或亚微米级研磨
- 采用筛式动态分离系统，最细可用直径为0.5mm的研磨珠
- Widely used for grinding pastes with higher fineness requirements such as automotive paint, industrial paint, color paste etc.. Can easily grind materials to micron or submicron.
- Adopt dynamic separation system (screen type), grinding beads size $\geq \phi 0.5\text{mm}$.

超细棒销式卧式砂磨机 Ultra-fine Horizontal Beads Mill (Pin Type)



- 棒销式转子，可满足物料粘度在50,000cps以下的浆料研磨
- 最小可装0.2mm铅珠，细度可达纳米级
- 采用集装式双端面机封，德国技术，全氟密封圈，能耐多种溶剂
- Pin type rotor can grind paste with viscosity within 50,000cps.
- Smallest beads can be loaded: $\phi 0.2\text{mm}$, can grind materials down to nano grade.
- Adopt integrated double end mechanical seal (German technology), perfluorinated sealing ring, resistance to various solvents

纳米非金属卧式砂磨机 Non-metal Nano Horizontal Beads Mill



- 研磨腔及内部结构采用非金属材料，广泛应于于对金属敏感的浆料，如电池浆料、纳米碳管等材料
- 驱动分散器可采用涡轮式、叶轮式、棒销式，研磨介质具备最佳的运动轨迹，研磨效率大大提升
- Its grinding chamber and internal structure is not metal. It is widely used for metal-sensitive slurry such as battery slurry, carbon nanotubes and other materials.
- The dispersion device can be turbine type, impeller type, pin type, so as to drive the grinding medium to have the best movement path and greatly improved grinding efficiency.

流体浆料处理设备 Liquid Paste Production Equipment

纳米立式砂磨机 Nano-grade Vertical Beads Mill



- 广泛用于油漆（汽车漆）、农药、油墨、造纸和纳米科技领域
- 最小可装0.1mm锆珠，细度普遍可达纳米级
- 多层棒销式内外转子，研磨效率更高
- Widely used in fields such as paint (automotive paint), pesticides, inks, papermaking, nanotechnology and so on.
- The minimum size of zirconium beads can be 0.1mm, and materials generally can be grounded down to nano grade.
- Multi-layer inner and outer rotors (pin type) for higher grinding efficiency.

液压升降篮式研磨机 Basket Mill (Hydraulic Lifting)



- 流体浆料研磨设备，一般适用粘度 $\leq 10000\text{cp}$
- 浸入式研磨方式，可快速清洗，更换不同品种或颜色产品进行研磨
- 处理能力50-1000L，可定制防爆机型
- Liquid paste grinding equipment, it is generally applicable for materials with viscosity within 10000cp
- Immersion type grinding equipment, it is easy to clean, easy to change different materials or different colors
- Capacity is 50-1000L, and can customized to be explosion proof type

真空型液压升降篮式研磨机 Vacuum Type Basket Mill (Hydraulic Lifting)



- 满足需要在真空状态或惰性气体保护状态下进行分散研磨的工况而设计
- 多重的冷却夹套，可有效的将研磨产生的热量带出
- Designed for dispersing and grinding materials under vacuum or inert gas protection condition
- With cooling jackets, can take away the heat generated during grinding process effectively

流体浆料处理设备 Liquid Paste Production Equipment

高剪切分散乳化机 High-shear Dispersing Emulsifier



- 采用CNC加工中心制造，转定子配合精度可达0.3mm，剪切效果好
- 含固定式和升降式两种，固定式分顶置、侧置、底置三个安装工位
- 可与分散、搅拌等不同搅拌器形式组合，实现一机多用的功能
- Manufactured by CNC Machining Center, the coordination accuracy between the stator and rotor is up to 0.3mm to ensure excellent shearing result
- Including two type: Fixed type and lifting type. Based on installation location, the fixed type is divided into: Fixed on top, fixed on side, fixed at bottom
- Can be combined with different agitators such as disperser, mixer to realize one machine with multi-fuctions

捷流式乳化机 Jetmixer Dispersing Emulsifier



- 高速旋转产生强效的宏观及微观混合，快速将物料分散均匀
- 常用于溶糖、溶粉、化胶、悬浮、加速反应、纳米材料与轻质粉末的分散、混合、解聚
- High-speed rotation emulsifying head generates powerful macro and micro mixing to disperse materials evenly within a short period
- Commonly used for dissolving sugar, dissolving powder, melting gel, suspension, accelerating reaction, dispersing/mixing/depolymerizing nano materials and light powders

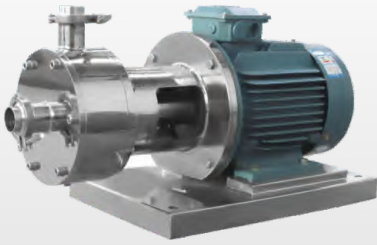
上喷式乳化机 Up-spray Emulsifier



- 世赫工业专利型产品，具有混合、分散、剪切均质功能
- 转子高速旋转产生强力的上窜力，物料由底部吸料，撞击上部挡板向四周喷射
- A patented product, with functions of mixing, dispersing, shear homogenizing
- Rotor rotating at high speed generates strong up-climbing force, so materials are sucked from bottom and then crash with the top baffle and jet to all around

流体浆料处理设备 Liquid Paste Production Equipment

单级管线式乳化机 Inline High-shear Emulsifier (Single Stage)



- 应用于连续式生产或循环处理精细物料的工作，管道安装，方便快捷
- 噪音低，运转平稳，无死角，物料100%通过分散、剪切的作用
- 前级可配置送料泵，对中高粘度物料有一定的适用性
- Applied for continuous production or fine materials circulation processing, installed in pipeline, easy and convenient
- Low noise, stable operation, no dead zone, all materials will be dispersed and sheared properly
- It can work with a materials feeding pump to enable it applicable for materials with mid-and-high viscosity

三级管线式乳化机 Inline High-shear Emulsifier (Three Stages)



- 转速最高可达6000rpm，线速度普遍20m/s以上，具备极高剪切力
- 三层转定子结构设计，不仅剪切效率高，同时具备一定的输送扬程
- 采用进口机械密封和密封圈，安全无泄漏；
- Rotation speed is up to 6000 rpm, tip speed normally is more than 20 m/s, with high shearing force
- With three layers of stator and rotor, it is not only with high shearing efficiency but also with certain delivery head
- Adopt imported mechanical seal and seal ring, safe and without leakage.

真空乳化机组 Vacuum Emulsifying Mixing Unit



- 包含均质乳化锅、水锅、油锅、粉锅（可选），是生产膏霜、软膏、乳液等专用设备
- 双向搅拌设计，顺时针刮壁搅拌减少挂壁残留，逆时针桨叶搅拌增强搅拌效果
- 中心均质乳化器，与搅拌分体控制，使物料快速分散、乳化、均质
- Consists of homogeneous emulsifying tank, water phase tank, oil phase tank, powder tank (optional). It is a machine unit specially designed for production of cream, ointment, emulsion and etc.
- With Bi-directional mixing design, clockwise-rotation scraper reduces wall residues, counterclockwise-rotation impeller enhances mixing effect
- The homogenizing emulsifier in the center and the mixer are controlled separately to disperse, emulsify and homogenize materials properly within a short period

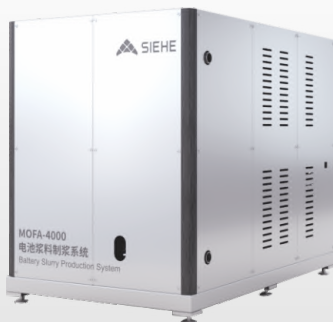
流体浆料处理设备 Liquid Paste Production Equipment

TDS在线高速分散机 TDS Inline High speed Disperser



- TDS输送和高速分散技术是一种在线高速制浆的技术应用，广泛应用于涂料、电池浆料、食品、医药等领域
- 吸粉范围从5kg/min~1000kg/min；处理流量从6m³/h~150m³/h
- TDS conveying and high-speed dispersing technology is a technology application of in line high speed slurry production. It is widely used in industries such as paint, battery slurry, food, medicine etc..
- Powder suction range: 5kg/min~1000kg/min
Processing flow: 6m³/h~150m³/h

MOFA制浆设备 MOFA Slurry Production Equipment



- 专为电池浆料在线制浆而开发的高性能设备，全面满足高/中/低粘度浆料的在线制浆需求
- 最大流量可达80m³/h，最大加粉速度可达26m³/h，最大固含比可达80%，浆料粘度最大可至100000mPa.s
- High-performance equipment specially developed for inline battery slurry production. It can fully meet the inline production of slurry with high/medium/low viscosity
- The maximum flow can be up to 80m³/h. The max. powder feeding speed can be up to 26m³/h. The max. solid content ratio can be up to 80%, and the max. viscosity of the slurry can be up to 100000 mPa.s

MOFA-4000型全自动高速制浆系统 MOFA-4000 Automatic High speed Slurry Production System



- 电池浆料全自动化生产，包含粉体配料、液体配料、制浆主机以及后道处理系统
- 批次制浆4000L/小时，生产能力1600L/小时，装机功率360KW
- Automatic Battery Slurry Production System includes powder batching, liquid batching, main slurry production equipment and post-processing system
- Slurry batch capacity 4000L/h, production capacity 1600L/h, installed power: 360KW.

高粘度浆料设备 High Viscosity Slurry Equipment

世赫集团引进欧洲技术，开创了独树一帜的高粘度浆料生产设备，包含双行星搅拌机、多轴强力搅拌机、三辊研磨机、挤出机、洗桶机等；处理粘度最高可达10,000,000cps，适用于高温、高固、高粘等高难度工况

SIEHE Group has introduced European technology and developed unique production equipment series for high-viscosity slurry, including Double Planetary Mixer, Powerful Multi-shaft Mixer, Tri-roller Mill, Extrusion Machine, Container Washing Machine etc.. They can process materials with viscosity up to 10,000,000cps, suitable for difficult working conditions such as high temperature, high solid content, high viscosity etc.



双行星强力分散搅拌机 Powerful Double Planetary Dispersing Mixer



- 双行星搅拌机加强版，带独立的高速分散装置，能够将粉料（助剂）快速的分散到浆料里
- 带料桶固定装置，运行安全，工作时与桶盖实现闭合，可配合真空系统实现真空搅拌、脱泡
- Upgraded version of Double Planetary Mixer, with separate high-speed dispersing device, can disperse powders (additives) into the slurry quickly
- With tank fixing device to ensure safe and stable running. Close the cover with the tank during operation. Can work with vacuum system to realize vacuum mixing and deaeration.

双行星动力混合搅拌机 Double Planetary Power Mixer



- 双分散轴多层刀盘设计，提高分散效率
- 采用缸升降方式，升降稳定可靠
- 可定制全不锈钢机型或防爆机型
- 广泛用于电池浆料、隔膜、碳化纳米管、银铝浆等领域
- The two dispersing shafts are with multi-layer dispersing disc to improve the dispersing efficiency.
- Adopt tank lifting design, stable and reliable lifting
- Customized full stainless steel type or explosion-proof type are available.
- Widely used in battery paste, membrane, carbonized nanotube, aluminum paste and other industry

高粘度浆料设备 High Viscosity Slurry Equipment

双轴液压升降强力搅拌机 Powerful Double Shaft Mixer (Hydraulic Lifting)



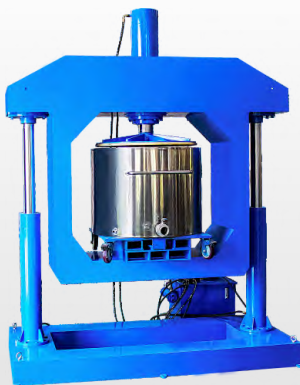
- 刮壁搅拌与强力分散组合式结构，对中高粘度及触变性物料具有很好的适应性
- 多种搅拌器形式可选，如锚式、蝶式、锚式带下压螺条等，搅拌器可带刮壁、刮底
- Agitator, scraper together with strong disperser, suitable for high-viscosity and thixotropic materials
- Various agitators are in options, such as anchor type, butterfly type, anchor with down-forward ribbon etc., agitators could be equipped with scraper for wall and bottom

三轴多功能强力搅拌机 Powerful Tri-Shaft Multi-Functional Mixer



- 三组搅拌器组合，低速刮壁搅拌配合高中速分散搅拌器或者配合双高速分散器或配合高剪切乳化器等
- 高速分散器根据处理量可多层设计，上层可移动；中速搅拌器常用螺杆式或框式
- Three sets of agitators, low speed scraper work with mid and high speed agitators or with two high-speed agitators
- High speed disperser can be designed to be with multi discs according to the capacity. The upper layer is movable. Middle speed agitator usually adopts screw type or frame type

挤出机（出料机） Extrusion machine (Discharging Machine)



- 行星搅拌机或多轴搅拌机的配套设备，用于将搅拌机生产出来的高粘度物料进行出料或分装
- 压料盘带有与料桶吻合的密封圈，下压过程中紧贴桶体，确保桶壁无残留
- Corollary equipment for Planetary Mixer or Multi-shaft Mixer, used for discharging or packing the high-viscosity material produced by the mixer.
- The pressing plate is equipped with seal ring which is matching the tank perfectly, During the pressing process, the seal ring clings to the wall of the tank tightly to ensure no residue.

高粘度浆料设备 High Viscosity Slurry Equipment

洗桶机 Barrel Washing Machine



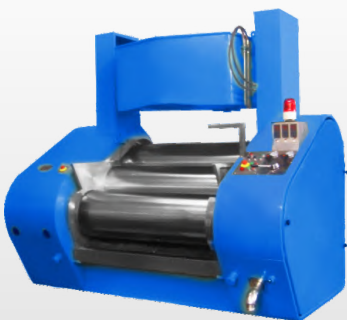
- 行星搅拌机或多轴搅拌机的配套设备，其作用是将完成出料的可移动料桶进行自动化清洗
- 所有流程可通过控制面板/PLC来设置和调节，一个人可操作完成清洗流程
- Corollary equipment for Planetary Mixer or Multi-shaft Mixer to do automatic cleaning for the movable materials-discharged container
- All processes can be set and adjusted by the Control Panel / PLC, one person can operate the cleaning process

平面型液压三辊研磨机 Flat Type Tri-roll Mill (Hydraulic Control)



- 通过液压控制、调节三个水平辊筒之间的间距，达到最终需要的产品细度和产量
- 根据物料粘度调整辊子的中凸度，针对高、中、低粘度的产品都有很好的适用性
- Hydraulic controlling and regulating of the gap between the three horizontal rollers to achieve the desired final fineness and production output
- The roller can be designed as per materials viscosity to be suitable for materials with high viscosity, mid viscosity, low viscosity respectively

斜面型液压三辊研磨机 Oblique Type Tri-roll Mill (Hydraulic Control)



- 通过液压控制、调节三个倾斜式辊筒之间的间距，达到最终需要的产品细度和产量
- 设备装有紧急制动按钮应对突发情况，可加装防护装置、红外感应装置、清洗棒装置
- Hydraulic controlling and regulating the gap between the three oblique rollers to achieve the desired final fineness and production output
- The machine is equipped with four emergency stop button in case of emergency, protective device, infrared sensor device and cleaning bar device are in option.

高粘度浆料设备 High Viscosity Slurry Equipment

粉体设备

世赫集团粉体设备是以混粉、干燥、反应的技术应用为主，输送、粉碎、筛分、包装等技术为辅的产品格局；完整的产品线，能够为用户提供全面的解决方案，在颜料染料、制药、食品、精细化工、冶金材料、建筑材料等行业得到广泛应用。

Powder Equipment

The powder equipment from SIEHE Group is based on the technology application of powder mixing, drying and reacting, supplemented by conveying, pulverizing, sieving and packing technology. With complete machine system, we can provide comprehensive solutions for customers in different industries such as pigment & dye, pharmacy, food, fine chemical industry, metallic materials, building materials and etc.

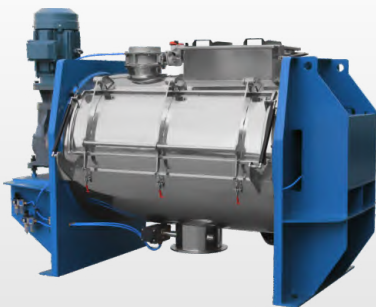


卧式螺带混合机 Horizontal Ribbon Mixer



- 独特的双螺带式设计，螺带不同的角度、方向绕法使物料产生不同的流动方向，物料通过不断的对流循环，剪切掺混达到快速混合
- 适用于粉体与粉体、粉体与液体的混合，还能搅拌膏状、粘稠的或大比重的物料
- Specially designed double ribbon with different angles and winding method leads to different material flowing directions so the materials are cycled, mixed thoroughly in a short time
- Suitable for mixing powder and powder, powder and liquid materials. It is also capable of mixing paste, viscous materials or materials with high specific gravity

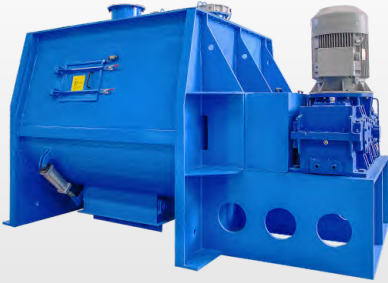
卧式犁刀混合机 Horizontal Plough Mixer



- 搅拌器由多组犁头与高剪切飞刀组成，满足混合要求的同时具备较高的粉碎、分散作用
- 针对原料结块、液体的雾化加入与粉料的吸附反应、抽真空加热干燥有很好的适用
- Agitator consists of multi-group of plow and high-shear chopper to meet the mixing requirements and at same time smash and disperse materials properly
- An excellent machine for following production: raw materials will cake together, adsorption reaction happens when spraying liquid into the powder under mixing, vacuum and heating for drying

粉体设备 Powder Equipment

卧式无重力混合机 Horizontal Twin Shaft Paddle Mixer



- 双轴搅拌器由多组特殊角度的桨叶组成，桨叶等速反向旋转，混合效率极高
- 出料阀采用与桶体贴合的弧形阀，混合无死角，大开门设计，双出料口，出料速度快
- Dual shaft agitator consist of multi-group blade with special angles. Blades rotate in opposite direction but same speed, which improve mixing efficient greatly.
- Discharging valves are arc valves flushing with mixing chamber to ensure no mixing dead corner. With a big-open door and two discharging port ensure fast discharging

连续式混合机 Continuous Mixer



- 桶体可设计U形或O形，搅拌形式分为桨叶式、犁头式、螺条式等。物料由一侧进料，另一侧出料，在混合机内停留30~120S，达到连续进料、连续出料的过程
- 生产能力10m³/h~400m³/h
- Cylinder can be U-shape or O-shape. Agitator can be blade-type, plow-type, ribbon-type and etc
- Materials are fed from one side while discharged from the other side, staying in the mixing chamber for around 30~120s to realize continuous materials feeding and discharging.
Capacity: 10m³/h~400m³/h

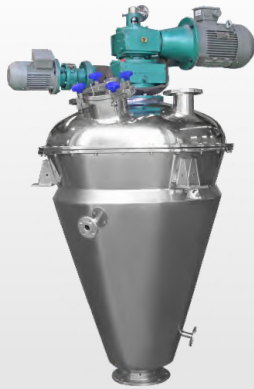
卧式干燥混合机 Horizontal Drying Mixer



- 混合、反应、干燥一步完成的功能型混合机。通过热水、热油、蒸汽等热媒进行加热，温度可精确控制，最高可达500°C
- 整机设计为密闭型，可以连接真空系统加速干燥，并配有除尘装置，冷凝回收装置减少原料损耗
- Multi-functional mixer finishes mixing, reacting and drying in one process Heating with thermal medium such as hot water, hot oil, steam and etc with accurate temperature control, highest temperature could be up to 500°C
- Closed type which can connect to vacuum system to speed up drying process. Dust collecting system is optional. Condensing and recycling device is equipped for reducing the loss of raw materials

粉体设备 Powder Equipment

双螺旋锥形混合机 Nauta Mixer



- 两根非对称式螺旋，通过自转、公转的方式将物料反复提升达到混合均匀目的
- 立式结构，出料残留少；功率配置低，混合均匀性高
- Double asymmetric screw lift materials repeatedly through rotation and revolution to mix materials uniformly
- Vertical structure, little discharge residue. Low power but high mixing uniformity

V 型混合机 V-shape Mixer



- V型桶体，通过筒体旋转将物料循环流动达到均匀的目的
- 混合无死角，清洗方便（可水洗），在食品、医药行业应用广泛
- With v-shape cylinder, materials do circulation movement with the rotation cylinder and become uniform
- Without mixing dead zones, easy to clean (can be cleaned by water), widely used in food and pharmacy industry

双锥型混合机 Tumbling Mixer



- W型桶体，物料受到筒体旋转带动及自身重力作用循环流动而达到混合均匀的目的
- 可增加夹套用于物料的加热干燥或对物料的冷却
- With w-shape cylinder, materials do circulation movement with rotation cylinder and fall due to gravity so that mix with good uniformity
- Jacket is available to heat materials for drying or cooling down materials

粉体设备 Powder Equipment

三维混合机 Three-dimensional Mixer



- 转筒固定在两根摇臂上，通过混合筒空间上的三维运动，实现多种物料之间相互流动、扩散
- 设备清洗方便；多品种小批量混合，还可以快速换桶实现
- Rotation cylinder is fixed on two rockers, materials are mixed through the cylinder moving in three dimension
- Easy to clean, suitable to mix various of materials in small batches, easy and fast to change cylinder

气流粉碎机 AirJet Pulverizer



- 成品细度高，产品粒度D97：2—150微米之间可调，粒形好，粒径分布窄
- 应用范围广，尤其适合于高硬度、高纯度、热敏性、低熔点、含糖份及挥发性物料的粉碎。
- Finished products with good fineness can be obtained. Adjustable particle size DN97: 2-150 micron, nice particle shape, narrow particle size distribution
- With wide application range, especially suitable for pulverizing high hardness, high purity, thermal-sensitive, low melting point sugary and volatile materials

万能机械粉碎机 All-round Mechanical Pulverizer



- 性能稳定、噪音低、耗电省、生产效率高、占地面积小
- 可更换不同目数的筛网来调节成品细度
- Stable performance, low noise, low energy consumption, high production efficiency and compact structure occupying small area
- Changeable of different screen mesh to adjust fineness of the finished product

粉体设备 Powder Equipment

微粉粉碎机 Micro Pulverizer



- 整套系统密闭粉碎，带粉尘收集器，粉尘少，噪音低，生产过程清洁环保
- 通过调节分级叶轮转速（反作用力）来调节成品细度
- The whole system is with closed pulverizing, with dust collector, little dust, low noise, clean and environmental during the whole production process
- Adjust final fineness of finished products through adjusting rotation speed of grading impeller (reacting force)

螺旋输送机 Screw Conveyor



- 按输送形式分为有轴螺旋和无轴螺旋，按外形分为U型螺旋和管式螺旋
- 输送角度0-45°，输送量可达40T/h
- According to the conveying form, with shaft screw and without shaft screw, according to the shape is divided into U shape screw and tube type screw
- Conveying angle 0-45 DHS, capacity can be up to 40 T/h

管链式输送机 Pipe Chain Conveyor



- 欧洲技术，解决了粉体机械输送中重质粉料远距离输送的难题，填补国内空白
- 外型轻巧、不受地形限制，可以水平、倾斜和垂直组合输送，可采用多点进料和多点出料
- European technology, it solves the problem in long distance mechanical delivery of heavy materials. It is the first one existing in China market. Compact structure, without any topography limit. Horizontal installation, inclined installation and vertical installation can be combined together if required. Multi-point feeding and multi-point discharging are optional.

粉体设备 Powder Equipment

斗式提升机 Bucket Elevator



- 垂直方向连续式提升设备，具有提升能力大，能耗低，噪音小，密封性能好的优点
- 提升范围广，可提升一般粉状、小颗粒状物料，亦可提升磨损性较大的物料
- Continuous lifting in vertical direction, with high lifting capacity, low energy consumption, low noise and good sealing performance
- With wide application range, it can lift normal powders, small granule materials as well as abrasive materials.

真空上料机 Vacuum Feeder



- 输送物料无分层，无粉尘泄漏、无交叉污染
- 模块化设计，无死角安装、清洗快捷方便
- 输送能力可达10T/h
- Conveyed materials are without lamination phenomenon, no dust leakage nor cross-contamination
- Modular design, no dead corner installation and easy to clean
- Conveying capacity can be up to 10T/h

气力输送系统 Pneumatic Conveying System



- 分负压密相输送、负压稀相输送、正压密相输送、正压稀相输送四种输送方式
- 密闭性，无环境粉尘污染；较低流速但输送能力大
- 可多点进料和多点卸料，输送管道内无积存
- Four different conveying methods: Negative pressure dense phase conveying, negative pressure dilute phase conveying and positive pressure dense phase conveying, positive pressure dilute phase conveying
- Closed type, no dust pollution to the environment. With low flowrate but large conveying capacity
- Can be customized to be with multi-point feeding and multi-point discharging, no accumulation in the pipeline

灌装与包装 Filling and Packing Machine

灌装与包装

无论是液体、膏体还是粉体，也无论是大小袋还是大小桶，世赫集团都能为您提供灌装/包装解决方案，同时我们能够生产医药级的产品，符合最新的GMP标准。

Filling and Packing Machine

SIEHE Group provides you with filling/packing solution for different materials such as liquid, ointment or powder packed in small/big bags or small/big pails. Meanwhile, we also can provide sanitary grade products in line with latest GMP standard.



称重式半自动液体灌装机 Semi-auto Liquid Filling Machine (Weighing Type)



- 称重法灌装方式，通过称重传感器输出信号控制进料阀的开度以实现灌装的目的
- 适合圆、方、扁及各种口径的灌装，可配套封盖装置
- 灌装范围：0.5~50kg，灌装精度：±2%
- Adopt weight type filling, weighing sensor outputs signal to control the opening of the materials-feeding valve to realize automatic materials filling
- Suitable for filling round, square, flat containers with different filling mouth size. Lid-enclosure device is optional
- Filling range:0.5~50kg, Filling accuracy: ±2%

容积式半自动液体灌装机 Semi-auto Liquid Filling Machine (Volume Type)



- 容积法计量，通过调节柱塞容积实现灌装量的控制
- 灌装范围0.5-20L
- 全气动控制，符合防爆要求
- Volumetric type, control the filling quantity by adjusting the piston volume
- Filling range 0.5-20L
- Full pneumatic control complying with explosion-proof requirements

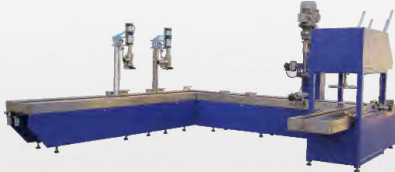
灌装与包装 Filling and Packing Machine

大桶半自动液体灌装机 Semi-auto Liquid Filling Machine (Big Drum)



- 灌头可设计带提升形式，适用于易起泡物料
- 配置滑动轨道，方便上桶和下桶
- 灌装范围50-2000kg，常规灌装200-300kg
- Filling head can be ascending type, which is suitable for filling easy-foaming materials
- Sliding roller conveyor is optional for loading and unloading drums easily
- Filling range 50-2000kg, normally it is 200-300kg

全自动液体灌装机 Full-auto Filling Machine



- 包含上桶、灌装、封盖、栈板供给、码垛等工序，自动化生产
- 采用防滴漏与拉丝的灌装头、防多泡产品的灌装升降系统提高灌装精度
- Full automatic filling process including: pail-on, filling, lid-closing, pallet supplying, stacking and etc
- Have the filling heads with anti-drop device, anti-materials hanging device, and ascending system for easy-foaming products to better the filling accuracy

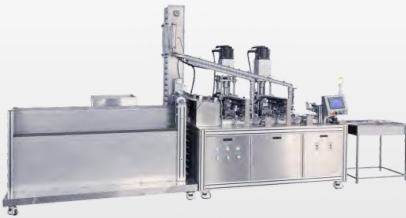
大桶自动液体灌装机 Auto Filling Machine (Big Drum)



- 含自动输入输出轨道系统，生产过程只需人工叉车上托盘和叉车下托盘
- 有200L桶(4桶)和1000L的IBC桶两种机型
- With automatic input and output roller conveying system, during the whole production process, operator only need to put the pallet on and take the pallet off by forklift
- Two models: for 200L drum and 1000L IBC drum respectively

灌装与包装 Filling and Packing Machine

高粘度全自动灌装机 High-viscosity Semi-auto Filling Machine



- 适用于圆筒管尾塞盖为包装容器的高粘度物料的定量灌装
- 包含自动上管、灌装、上盖、压盖的工序
- 灌装量200~400ml，生产效率：5~30支/min
- Suitable for the quantitative filling of high viscosity materials into round tube with the lid inserted at the end
- Working process including: auto tube-delivering, filling, lid-on, lid-capping
- Filling volume: 200~400ml, Filling capacity: 5~30 branch/min

软包装自动分装机 Automatic Soft Sausage Filling Machine



- 该机主要用于胶黏剂行业，如玻璃胶、硅酮胶、聚氨酯胶等产品
- 包装规格：300-600ml□包装速度：15-25支/分钟
- 薄膜材质：铝复合薄膜
- Mainly used in the adhesive industry, such as glass adhesive, silicone adhesive, polyurethane adhesive and other products
- Filling range: 300-600ml, Filling speed: 15-25 pieces/minute
- Film material: aluminum composite film

阀口半自动粉体包装机 Valve Bag Semi-auto Powder Packing Machine



- 适用于10KG-50KG粉料的阀口袋包装
- 分为螺旋式和气吹式两种，螺旋式包装精度高，气吹式包装效率高
- Suitable for packing powders to valve bags 10kg to 50kg
- Including screw type with higher packing accuracy and air-blow type with higher packing efficiency

灌装与包装 Filling and Packing Machine

阀口全自动粉体包装机 Valve-bag Auto Powder Packing Machine



- 含自动送袋、吸袋、套袋、定量包装、运袋工序
- 称重范围：5-25kg或10-50kg，包装速度：90-480 包/小时
- Including automatic bag delivering, bag suction, bagging, quantitative packing and packed bag conveying
- Weighting ranges: 5-25kg or 10-50kg, Packing speed: 90-480 bags/h

敞口半自动粉体包装机 Top-open Bag Semi-auto Powder Packing Machine



- 喂料方式多样，包括双螺旋喂料、单螺旋喂料、大小阀门喂料、振动喂料等
- 一般采用双速给料，快给料保证产量，慢给料变频控制保证精度
- Various feeding methods including two screw feeding, one screw feeding, big and small valve feeding, vibration feeding etc
- Normally adopt two-speed feeding: Fast feeding is to ensure capacity and slow feeding with frequency control is to ensure accuracy

敞口全自动粉体包装机 Top-open Bag Auto Powder Packing Machine



- 含自动送袋、吸袋、套袋、定量包装、整形、缝包、运袋等工序
- 称重范围：10-50kg，包装速度：200-300 包/小时
- Working process including auto bag delivering, bag suction, bagging, quantitative packing, shaping, sewing, packed bag conveying etc
- Weighing range: 10-50kg
Packing Speed: 200-300 bags/ h

灌装与包装 Filling and Packing Machine

竖直螺旋粉体包装机 Vertical Screw Powder Packing Machine



- 适用于容易扬尘且精度要求较高的超细粉末的包装
- 整机采用不锈钢材质，符合GMP要求
- 灌装范围：100g-1kg-5kg（分两档），灌装精度： $\leq \pm 0.1-0.2\%$
- Suitable for packing dusty powder and superfine powder with high accuracy requirements
- The whole machine is made of stainless steel in line with GMP requirements
- Weighing range: 100g-1kg-5kg (Two ranges)
Weighing accuracy: $\leq \pm 0.1-0.2\%$

吨袋粉体包装机 Ton Bag Powder Packing Machine



- 由挂袋系统、称重系统、给料系统组成
- 可采用液压缸或气缸升降系提升吨袋
- 设备材质可选用碳钢、SS304不锈钢、SS316L不锈钢
- Consists of bag hanging system, weighing system and feeding system
- Adopt hydraulic cylinder or pneumatic cylinder to lift the ton bag
- Different materials are optional, can be carbon steel, SS304, SS316L

小袋自动粉体包装机 Small Bag Auto Packing Machine



- 能自动完成制袋、计量、填充、充氮、打码、切袋等工作
- 制袋长度：80-350mm，制袋宽度：80-250mm；
- 包装速度：25-75包/分钟
- Automatic working process including: Automatic bag making, weighing, filling, nitrogen inputting, coding, bag cutting etc
- Bag length: 80-350mm
Bag width: 80-250mm
- Packing Speed: 25-75 bags/min

过滤与筛分 Filtrating and Sieving Equipment

世赫集团在设计、选材和制造工艺上不断创新，坚持制造高品质的过滤产品，为客户提供全面、全程、全新的专业过滤技术支持！

SIEHE Group always devotes herself to doing innovation in design, material choosing and manufacture processing, insists in manufacturing high quality filtration products and provides comprehensive and professional filtration technical support.



袋式液体过滤器 Liquid Bag-type Filter



- 包含单袋过滤器、多袋过滤器，摇臂袋式过滤器、高精度袋式过滤器等
- 过滤精度高，适用于任何细微颗粒或悬浮物，过滤范围可从0.5~200 μm
- Including: single bag filter, multi-bag filter, rocker arm bag type filter, bag-type filter with high accuracy etc
- With high filtration accuracy, suitable for fine granules or suspension solid, filtration range: 0.5~200 μm

旋转刮刀式自清洁液体过滤器 Scraper Type Self-cleaning Liquid Filter



- 旋转刮刀分为外刮式和内刮式两种
- 全自动在线连续过滤，满足自动化工艺操作要求
- 过滤范围：30~3500 μm ，最大流量：20 m^3/h
- Including inner scraper type and outer scraper type
- Automatic inline continuous type filter can meet the requirements of automatic production process
- Filtration range:30 to 3,500 μm , Max. flowrate: 20 m^3/h

过滤与筛分 Filtrating and Sieving Equipment

圆盘刮刀式自清洁液体过滤器 Disc type Self-cleaning Liquid Filter



- 独特的密封结构，配合专用密封圈，严格杜绝内外泄露
- PLC控制功能：压差自清洗，定时自清洗，手动自清洗；压差优先
- 过滤范围：30~3500 μm ，最大流量：20 m^3/h
- Special sealing structure equipped with professional seal rings to avoid any possible leakage
- PLC control function: pressure difference self-cleaning, timing self-cleaning, manual self-cleaning, pressure difference self-cleaning is on a priority
- Filtration range: 30~3,500 μm , maximum flowrate: 20 m^3/h

振动筛 Vibrating Sieve



- 配有鸭嘴阀，操作方便，出料干净无残留
- 带有移动脚轮，使用时机动性好
- With duckbill valve, easy to operate and to discharge without residuals
- With removable casters, good maneuverability

滤芯式液体过滤器 Cartridge Type Liquid Filter



- 用于中低粘度流体介质的过滤，高精度的过滤装置
- 适用于液体保安过滤、精密过滤和微孔过滤
- 最高过滤精度可达0.05 μm
- Filter with high filtration accuracy, suitable for liquid materials with middle or low viscosity
- Suitable for liquid precision filtration, micro filtration
- Filtration accuracy is up to 0.05 μm

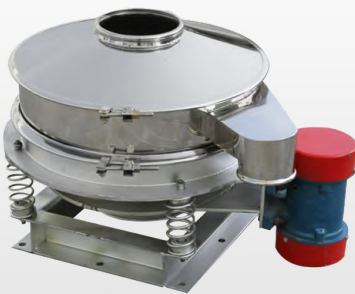
过滤与筛分 Filtrating and Sieving Equipment

液体过滤小车组件 Liquid Filtration Cart Unit



- 含气动隔膜泵、袋式/滤芯式过滤器、不锈钢推车
- 输送泵具备一定的扬程，同时有自保功能，即使在过滤堵塞的情况下，也不会致泵损坏
- Including air diaphragm pump, bag-type / cartridge type filter, stainless steel cart
- Delivery pump is with certain lift and also with self-protect function to ensure the filter will not be damaged even though the filter is blocked

旋振筛 Vibration Sieve



- 高精度细粉筛分机械，适用于粒、粉、粘液等物料的筛分过滤
- 可单层或多层使用，出料口方向可任意调整
- A type of high-precision sieving machine, applicable for materials like granule, powder and sticky liquids, etc
- Single-layer and multi-layer design are optional, and the direction of outlet can be adjusted at will.

气流筛 Airflow Sieve



- 筛分效率高、产量大，细度精确、无超径混级现象
- 全封闭结构，无粉尘溢散，噪音小能耗低、可连续作业
- High efficiency, large output, accurate fineness, without bigger size than required or powders with different sizes mixed together
- Fully-closed structure, no dust overflow, low noise, energy-saving and workable for continuous operation

辅助设备 Auxiliary Equipment

辅助设备

世赫集团在为客户提供核心产品的同时，在系统项目交付过程中还为客户提供各种相关、辅助设备，包括各种形式的储罐、搅拌罐、料仓及拆袋和除尘设备等。

Auxiliary Equipment

SIEHE Group not only provides core products, but also the related / auxiliary equipment such as storage tanks, mixing kettles, bins, unpacking devices and dust collectors etc..



常压容器 Non-pressure Container



- 一类用来完成储存、暂存、常压搅拌混合等工艺过程的与大气压力相通的容器
- 按结构分上平盖下封头/锥体式、上下封头式、圆柱式等
- Containers used as storage tank, temporarily storage tank, non-pressure blending mixer
- According to structure, it is divided into: With flat cover and conical bottom, with top and bottom dished end, cylinder type etc

反应釜 Reactor



- 按压力分为：常压型、负压型、正压型、正负压力型
- 加热冷却方式分为：夹套型、外盘管型、外夹套内盘管型、内外盘管型
- According to pressure, it is divided into: Atmospheric pressure container, negative pressure container, positive pressure container, and negative-and-positive pressure container
- According to heating and cooling methods, it is divided into: jacket type, outer coil type, outer jacket and inner coil type, inner and outer coil type

辅助设备 Auxiliary Equipment

搅拌罐 Mixing Kettle



- 根据物料特性和工艺需求，设计适合的桨叶形式和转速（高、中、低速）
- 可多组搅拌器组合式设计，减少生产工序，满足多功能搅拌需求
- Proper agitator with different rotation speed (high, middle, low velocity) is designed according to materials property and production process
- Combined agitators to reduce production process and meet the requirement of multi-functional mixing

卫生级容器 Sanitary Vessel



- 卫生级容器包括储罐、拉缸、搅拌罐等，按照GMP规范要求制造
- 可设有液位计口、空气呼吸器、温度计、CIP清洗口、SIP灭菌口、视镜等
- Sanitary Vessel including storage tank, removable tank, mixing tank etc. are fabricated in line with GMP standards
- Opening are optional such as level indication port, breath port, thermometer port, CIP cleaning port, SP sterilization port, sight glass etc

压力容器 Pressure Vessel



- 特种设备，提供一类和二类压力容器设备
- 按用途分：反应压力容器、带搅拌压力容器、换热压力容器、储存压力容器
- A kind of special equipment, we provide I Class Pressure Container and II Class Pressure Container
- According to usage, it is divided into: Reaction Pressure Container, Pressure Container with Agitator, Heat Exchange Pressure Container, and Storage Pressure Container.

辅助设备 Auxiliary Equipment

储罐 Storage Tank



- 按固定方式分立式储罐和卧式储罐
- 按压力等级分常压储罐和压力储罐
- According to fixing way, it can divide into vertical storage tank and horizontal storage tank
- According to the pressure rating, it can divide into non-pressure storage tank and pressure tank

移动拉缸 Removable Tank



- 可用于常压环境（普通拉缸）和耐压环境（挤压出料拉缸）
- 拉缸底部形式分为平底无斜度拉缸、平底斜角拉缸、封头底拉缸、锥底拉缸等
- Can be used in atmospheric environment (normal tank) and pressure environment (tank working with extrusion machine)
- Different type of tank bottom: Flat bottom without slop, flat bottom with slop, bottom with flat dished end, conical bottom etc

大料仓 Big Silo



- 用于储存各种粉体原料，一般采用立式设计
- 可配套仓顶除尘器，振荡器（破拱器）、料位计等
- Used for storing all kinds of powder raw materials, generally vertical type
- Silo Top Dust Collector, Vibrator (anti-bridge device), Level Indicator etc. are optional

辅助设备 Auxiliary Equipment

称重仓 Weighing Bin



- 常用于粉料自动化生产线，其前端需配置原料储存仓（一种原料至少一个原料仓）
- 通过增重法或减重法进行称重计量，完成配料工序
- Normally used in powder automation production line after raw materials storage silo (At least one raw materials silo for one raw materials)
- Complete the batching process through weight gain or weight loss measurement

滤袋式除尘 Bag-type Dust Collector



- 干式滤尘装置，适用于捕集细小、干燥、非纤维性粉尘
- 除尘效率高，一般在99%以上，对亚微米粒径的细尘有较高的分级效率
- 带回收料桶，用于回收利用收集的粉尘
- Dry Dust Filter, applicable for collecting small, dry and non-fibrous dust.
- High dust removal efficiency, normally more than 99%. It is with good classifying efficiency for submicron fine dust
- With dust collection hopper for recycling the collected dust

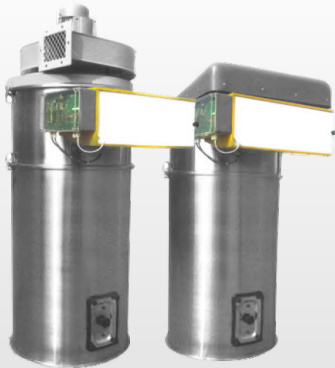
滤芯式除尘器 Cartridge Type Dust Collector



- 清灰能力强、除尘效率高、排放浓度低、能耗低、占地面积小
- 采用高品质的滤料及配件，滤芯平均寿命一般超过18个月
- Strong dust cleaning ability, high dust removal efficiency, low emission concentration, low energy consumption and less area occupation.
- Adopt high quality filter element and its accessories, the average service life of the filter element is generally more than 18 months

辅助设备 Auxiliary Equipment

仓顶除尘器 Silo Top Dust Collector



- 用在料仓中的除尘设备，据过滤形式分为滤袋式和滤芯式两种
- 广泛应用于气力输送粉料的工艺（如大粉仓、中转仓顶部）
- 采用法兰与料仓连接，一体式设计，运输及安装方便
- Used as dust removal device for silos. It can be divided into bag type and cartridge type according to the filter element
- Widely used for big powder silo, intermediate hopper etc.in pneumatic powder conveying process (Installed at the top of them for removing the dust)
- Connect with the silo with flange, one-piece design, easy to transport and to install

小袋投料站 Small-bag Feeding Station



- 常用于25kg或50kg袋装粉粒状物料开袋卸料作业
- 可选配：除尘器、压袋器、振动料斗、空气锤、旋转阀、筛分机等
- 设备出料口可连接真空上料机、螺旋输送机和各种输送设备
- Commonly used for unpacking and discharging bags (25kg or 50kg) filled with powder or granule materials
- Accessories are in options: Dust Collector, Bag Pressing Device, Hopper with Vibrator, Air Hammer, Rotary Valve, Sieving Machine etc.
- The discharging port of the device can be connected to the Vacuum Feeder, Screw Conveyor as well as other conveying device

吨袋卸料站 Ton-bag Discharging Station



- 可采用吊机和叉车两种不同的方式上袋
- 可配双轨道，两个拆袋工位，提高拆袋效率
- 带气动按摩板装置，不用人工抖带，减少袋内残留
- Lift the bags to the machine through hoist or forklift
- Dual track is optional for two unpacking working positions to enhance the bag unpacking efficiency
- With pneumatic massage plate device, no need to shake bags manually and reduce the residue in bags

工程项目 Engineering Project

液体\粉体储存及配料系统

包含储存、输送、配料、给料等工艺过程，世赫集团设计、制造的配给料系统，可提高工艺控制精度、产品质量和生产效率，同时数据库化管理和网络化管理，极大的提高工厂的管理水平。

Liquid / Powder Storing and Batching System

Including process such as storing, conveying, batching, feeding. The batching and feeding system from SIEHE Group can improve the process control accuracy, product quality and also production efficiency. Meanwhile, with database and network management, factory management will be improved greatly.



工程项目 Engineering Project



工程项目 Engineering Project

流体成套工程项目

包含：合成、反应、均质乳化、研磨细化、分散混合、保持悬浮、过滤灌装等各种工艺过程，广泛用于涂料、油墨、树脂、化妆品、农药、洗涤剂、润滑油、真石漆、腻子等行业。

Liquid Complete Engineering Project

Including all sorts of production processes such as synthesis, reaction, homogeneous emulsifying, grinding, dispersing and mixing, keep suspension, filtration and filling etc.. It is widely used in industries such as coating, ink, resin, cosmetics, pesticide, detergent, lubricating oil, stone paint, putty, etc.



工程项目 Engineering Project



工程项目 Engineering Project

高粘度成套工程项目

包含：高粘度搅拌设备（双行星强力分散搅拌机、双轴&三轴多功能搅拌机）、匀浆细化设备（液压三辊研磨机）、出料设备（液压挤出机）、加热设备（模温机&蒸汽发生器）、真空设备、粉体&液体自动配料系统等，广泛应用于各种胶黏剂、电池浆料、油性腻子、油墨、涂料等领域。

High-viscosity Complete Engineering Project

Including: high viscosity mixing equipment (Powerful Double Planetary Dispersing Mixer, Double & Tri-Shaft Multi-functional Mixer), homogenizing grinding equipment (Hydraulic Tri-roller Mill), discharge equipment (Hydraulic Extrusion Machine), heating equipment (Temperature Controller Unit & Steam Generator), vacuumizing equipment, powder & liquid automatic batching system, etc., which are widely used in various industries such as adhesive, battery slurry, oily putty, ink, paint and etc...



工程项目 Engineering Project



工程项目 Engineering Project

粉体成套工程项目

世赫集团的粉体成套设备包含：混合、粉碎、输送、筛分、包装等工艺过程，应用领域包含食品、医药、精细化工、耐火材料、干粉砂浆、粉末冶金、染料颜料、农药化肥、饲料、干粉腻子等行业。

Powder Complete Engineering Project

Powder Complete Engineering Project from SIEHE Group consists of following processes: mixing, pulverizing, conveying, sieving, packing etc.. It is applied in industries such as food, medicine, fine chemical, refractory material, dry mortar, powder metallurgy, dyes and pigments, pesticides and fertilizers, fodder, dry powder putty, etc.



工程项目 Engineering Project



应用领域 Applications

世赫工业专业从事分散、研磨、乳化、搅拌混合的技术应用和产品开发，为化工、涂料、颜料、油墨、无机物和矿物、胶黏剂、陶瓷、医药、食品、化妆品、造纸化学品、润滑油、农药、冶金材料、耐火材料以及饲料、建筑材料等行业提供设备与成套工程。

SIEHE Group is specialized in technology application and product development of dispersing, milling, emulsifying, mixing. We provide equipment and complete projects for industries such as chemical, coating, pigment, ink, inorganic substances and mineral, adhesive, ceramic, paper chemical, lubricating oil, pesticides, metallic materials, refractory materials and fodder, building materials, etc.



树脂 Resin



油墨 Ink



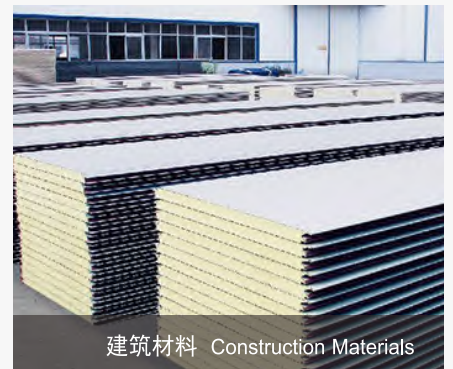
锂电池材料 Lithium Battery



农药 Pesticides



染料与颜料 Dyes And Pigment



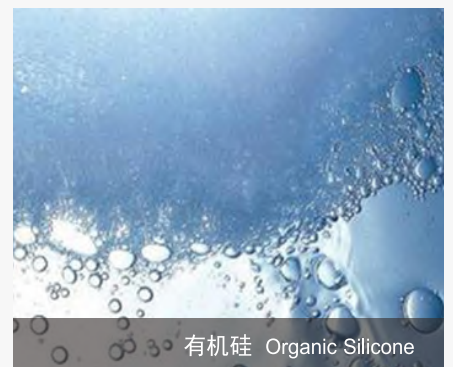
建筑材料 Construction Materials



润滑油 Lubricant Oil

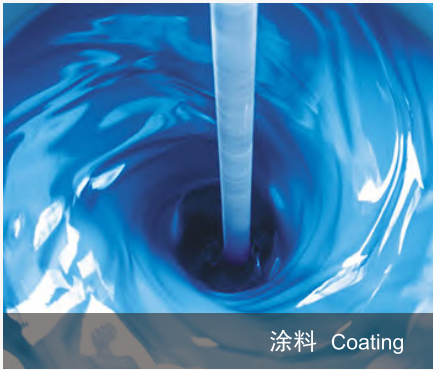


塑料 Plastic



有机硅 Organic Silicone

应用领域 Applications



涂料 Coating



油漆 Paint



胶黏剂 Adhesive



食品添加剂 Food Additives



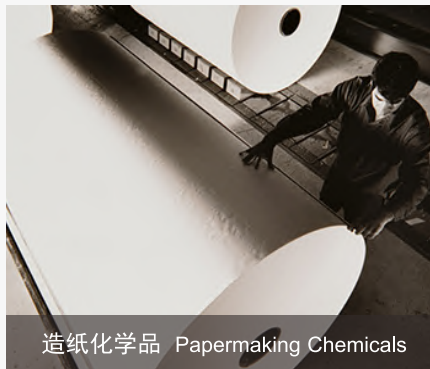
医药中间体 Medicine



化妆品 Cosmetic



香精香料 Essence



造纸化学品 Papermaking Chemicals



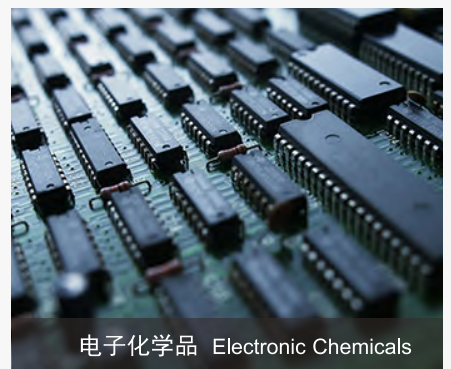
饲料 Feed



表面活性剂 Surfactant



油田化学品 Oilfield Chemicals



电子化学品 Electronic Chemicals



WhatsApp



世赫智能设备（上海）有限公司
SIEHE SMART EQUIPMENT (SHANGHAI) CO.,LTD

地址：上海市虹桥商务区泰虹路168弄万科时一区1号305-307室
工厂地址：上海市金山区万枫公路2777号新宜银河一号智慧产业园D2幢
电话：+86 21-52913185 传真：+86 21-52912822
邮箱：siehe@siehechina.com
网址：www.siehesmart.com

SIEHE Group CO.,LTD

Office: Rm. 305-307, Building 1, No. 168 Taihong Rd., Hongqiao Business District, Shanghai
Factory: Block D2, Intelligent Industry Park, No. 2777 Wanfeng Rd, Jinshan District, Shanghai, China
Tel: +86 21-52913185
Fax: +86 21-52912822
E-mail: siehe@siehechina.com
Web: www.sieheindustry.com